

PROGRAMS

ENGLISH FOR ACADEMIC PURPOSES (EAP)

As the main program at the ELI, English for Academic Purposes is an intensive program which serves students conditionally admitted to Syracuse University and students from other cohorts. The program equips them with language skills and intercultural awareness to ensure cultural adjustment and success in future studies and careers.

ENGLISH FOR ARCHITECTS

In the English for Architecture program, students boost the communication skills they will need in the School of Architecture. In addition to honing their academic English language skills through meaningful tasks related to issues and topics in the dynamic and interdisciplinary field of architecture, students also get the opportunity to explore the campus and the resources available to them at the university.

ENGLISH FOR LAWYERS

English for Lawyers is a bridge program designed for LLM students to provide them with additional language practice in a legal context, help them adjust to American culture, and facilitate a smooth transition to Syracuse University College of Law.

FULBRIGHT - ENGLISH FOR GRADUATE STUDIES (EGS)

The Fulbright EGS program is sponsored by the U.S. Department of State's Bureau of Educational and Cultural Affairs and provides a 4-week induction into U.S. academic culture. Throughout their time in Syracuse, the participants are exposed to a wide variety of campus resources and networking opportunities. Upon completion, the Fulbrighters go on to pursue their masters or PhD programs at their host institutions in locations across the U.S.

ENGLISH LANGUAGE INSTITUTE

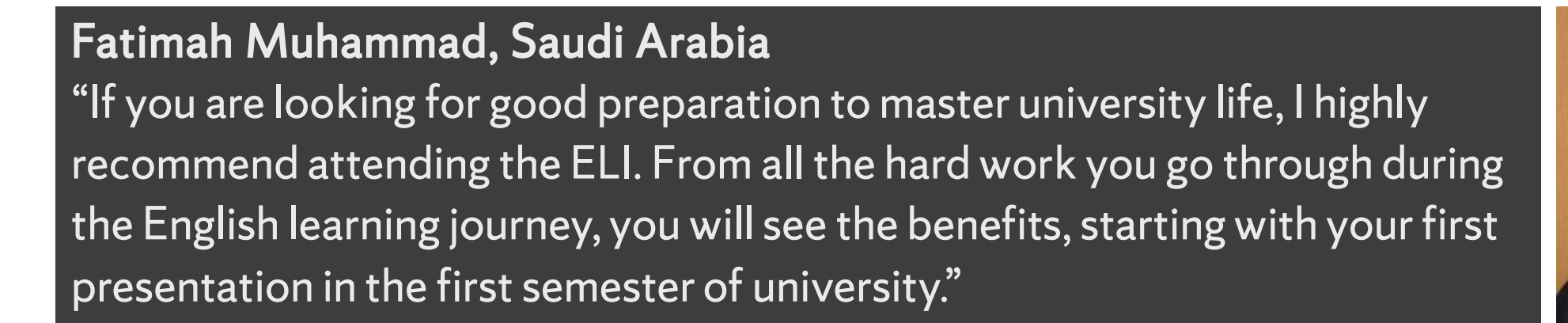
The English Language Institute specializes in pre-academic training programs that prepare international students for success in undergraduate and graduate degree programs at Syracuse University and universities across the United States. Student learning outcomes include both language acquisition and intercultural competence, paving the way to better academic performance. The ELI offers programs in both EAP (English for Academic Purposes) and ESP (English for Specific Purposes), designed in partnership with graduate programs at the university. The ELI also works collaboratively with partners both on and off campus to support the University's internationalization efforts and international education in general.



STUDENT TESTIMONIALS



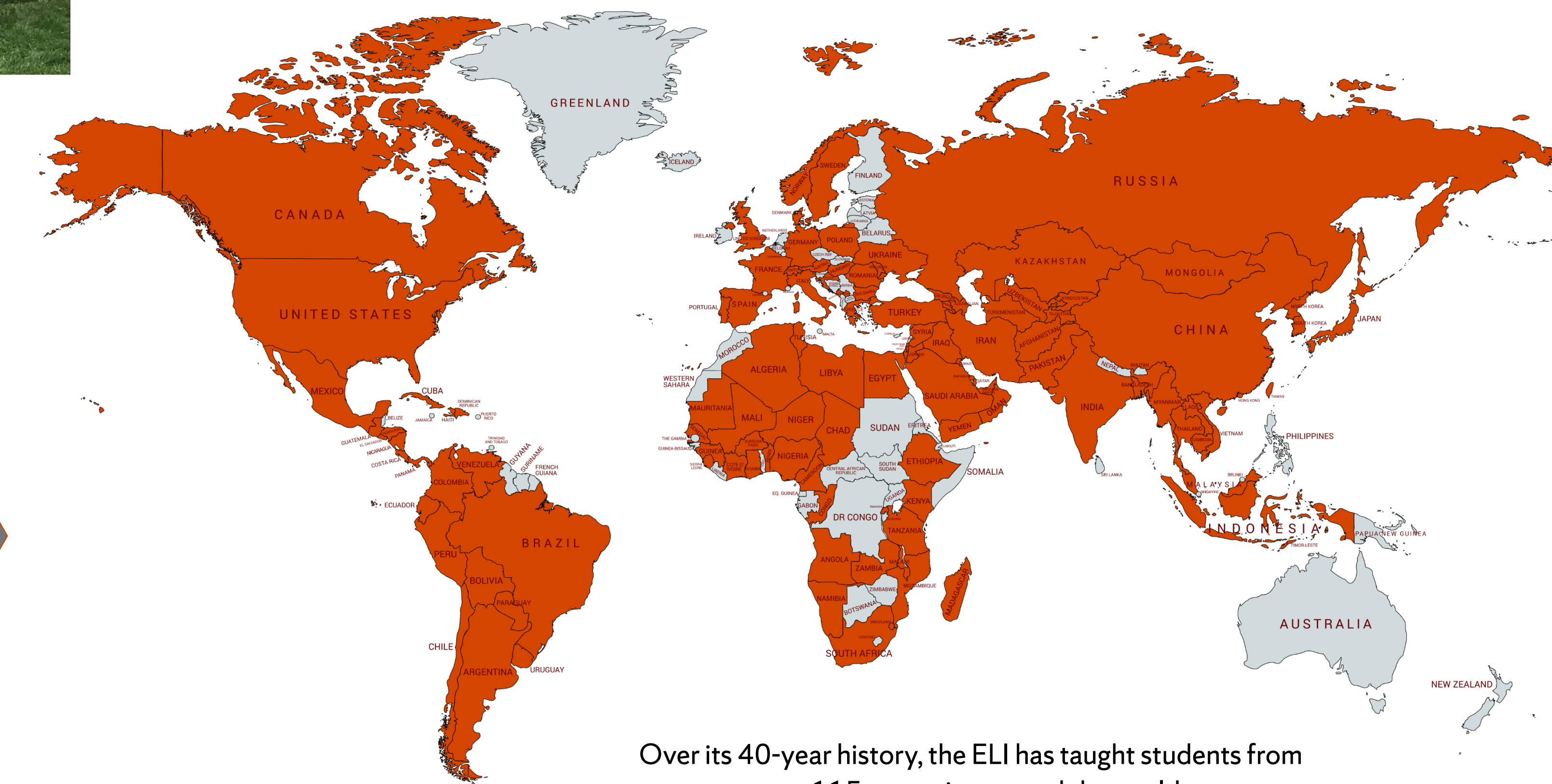
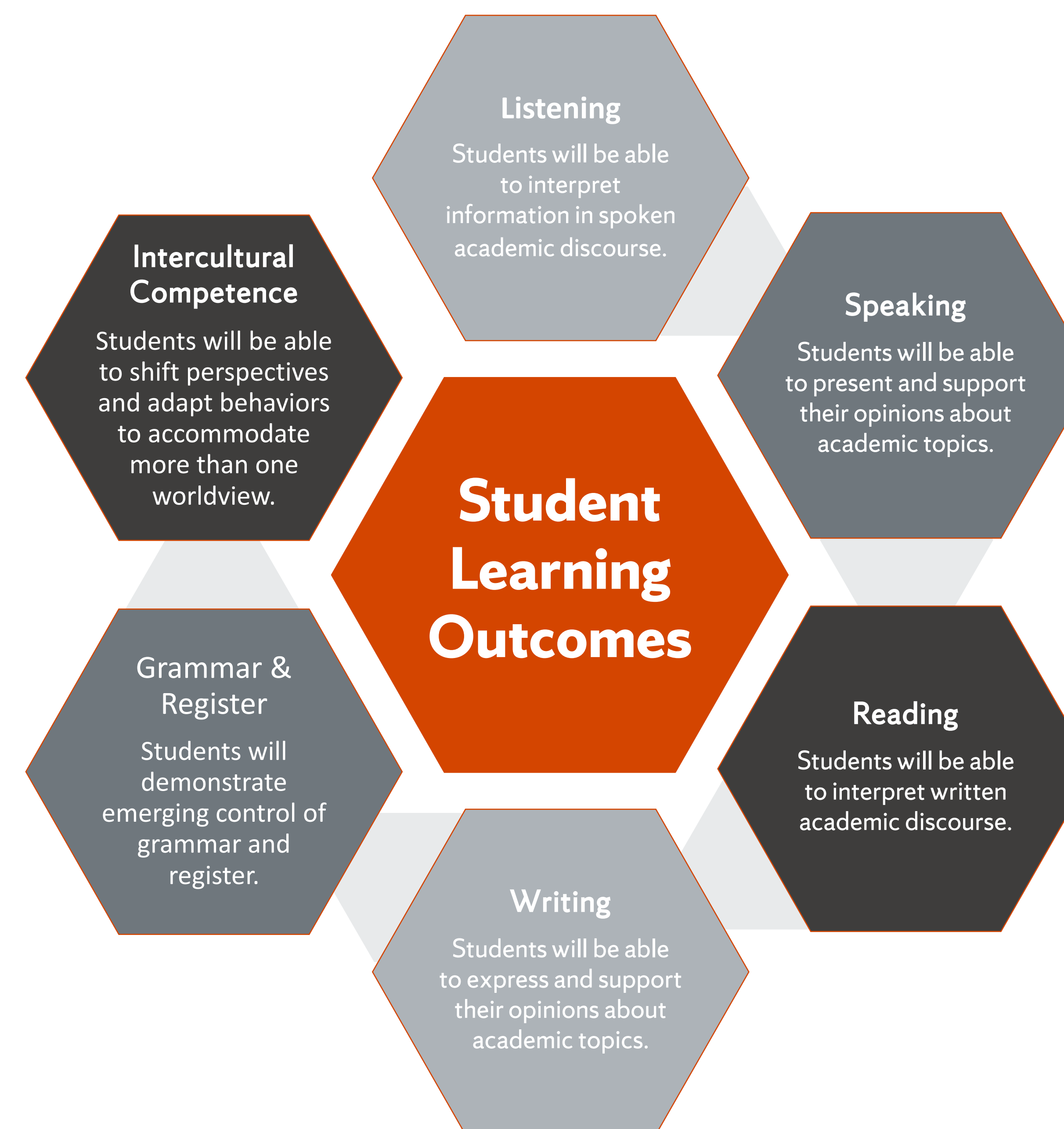
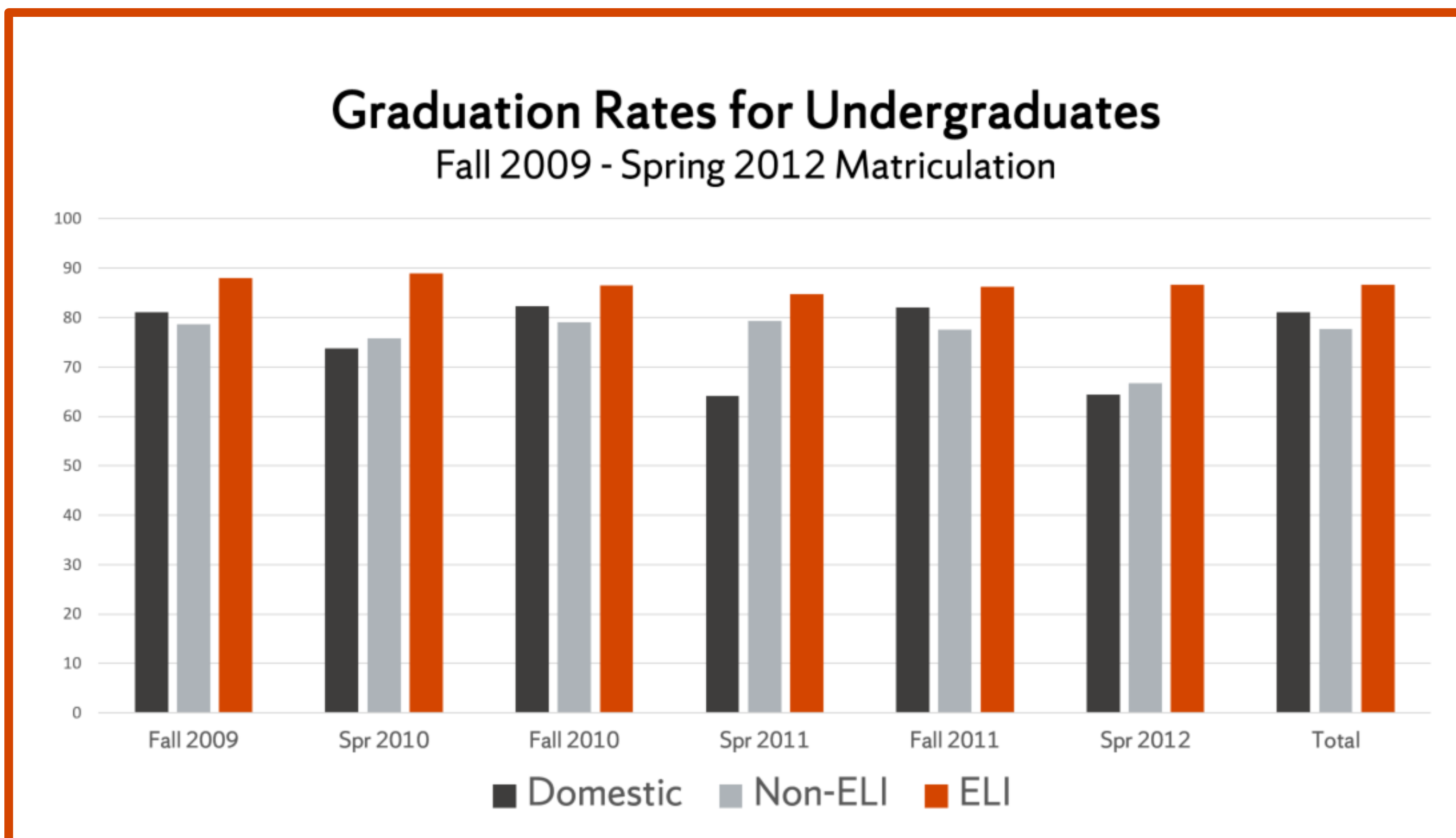
Abdulaziz AlKandari, Kuwait
 "Professional teachers at the ELI encouraged me to improve my English skills. Effective curriculum and materials made study more interesting and efficient. The ELI prepared me for academic life by giving me primary skills to do well in graduate school."



Fatimah Muhammad, Saudi Arabia
 "If you are looking for good preparation to master university life, I highly recommend attending the ELI. From all the hard work you go through during the English learning journey, you will see the benefits, starting with your first presentation in the first semester of university."



Stanley Moise, Haiti
 "Attending the ELI is like integrating into a new family. I am making significant progress in my academic English in record time. The staff is committed to each student without distinction. They are willing to help each of us with all our academic and personal needs. I assume that the school is quite unique."



Over its 40-year history, the ELI has taught students from over 115 countries around the world.

STUDENT COUNCIL

One student from each level is elected by their classmates to represent their class; Student Council meets weekly to discuss important upcoming dates, plan events, share classroom issues and concerns, volunteer their time to charities, collect donations for charitable organizations, and develop leadership skills. Student Council empowers students to use their voices to act as leaders and helps them build their resumes.



SPRING 2019 NON-PROFIT ORGANIZATIONS
 Syracuse Rescue Mission
 Society for the Prevention of Cruelty to Animals (SPCA)

ONE UNIVERSITY INITIATIVES

In an increasingly global environment, intercultural competence has become more important than ever. Through collaborations with partners across the Syracuse University community, the ELI provides students with opportunities to discover new viewpoints and ways of interpreting the world around them.

Conversation Groups	Mentor Program	Conversation Partners	Tutor Training	Teaching Practicum	Class Exchanges	Book Publication
Volunteers from the SU community	Students from degree programs on campus	Students from LLL classes	Tutors from the Center for Learning And Student Success (CLASS)	Languages, Literatures, and Linguistics Department	Professor and students from WRT classes	WRT professor & New City Community Press
Group leaders hold weekly conversations	Mentors hold weekly meetings and plan activities	Students meet one-on-one weekly, speaking in both native languages	Tutors attend cultural training sessions led by ELI instructors	LLL students observe and teach ELI classes	WRT students exchange 'artifacts' with ELI students and discuss interpretations in combined classes	Students wrote short stories about experiences coming to the US
ELI students get informal English practice	ELI students connect with SU students and integrate into US culture	ELI students practice English and LLL students practice foreign languages	Tutors are better prepared to work with international students	LLL students get experience in an ESL classroom	WRT students engage with international students	Increased understanding of cultural differences

